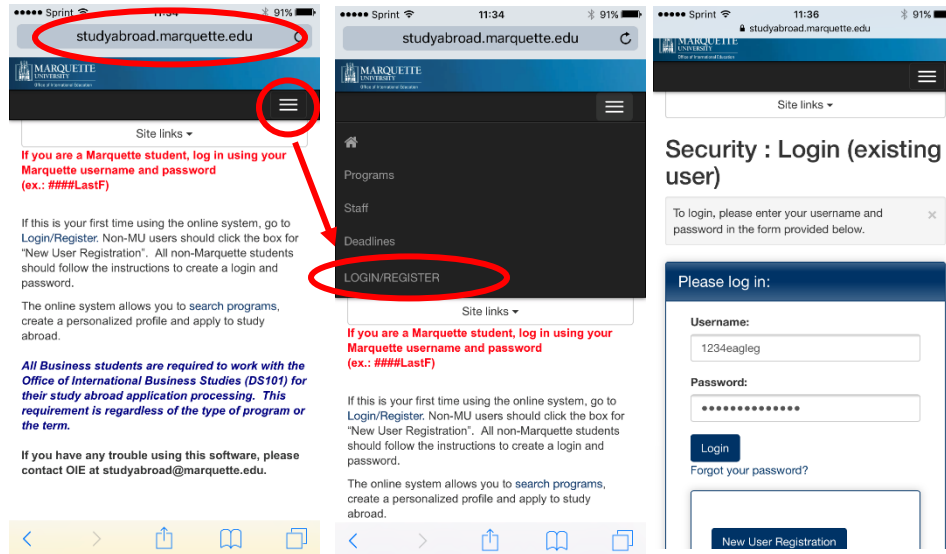


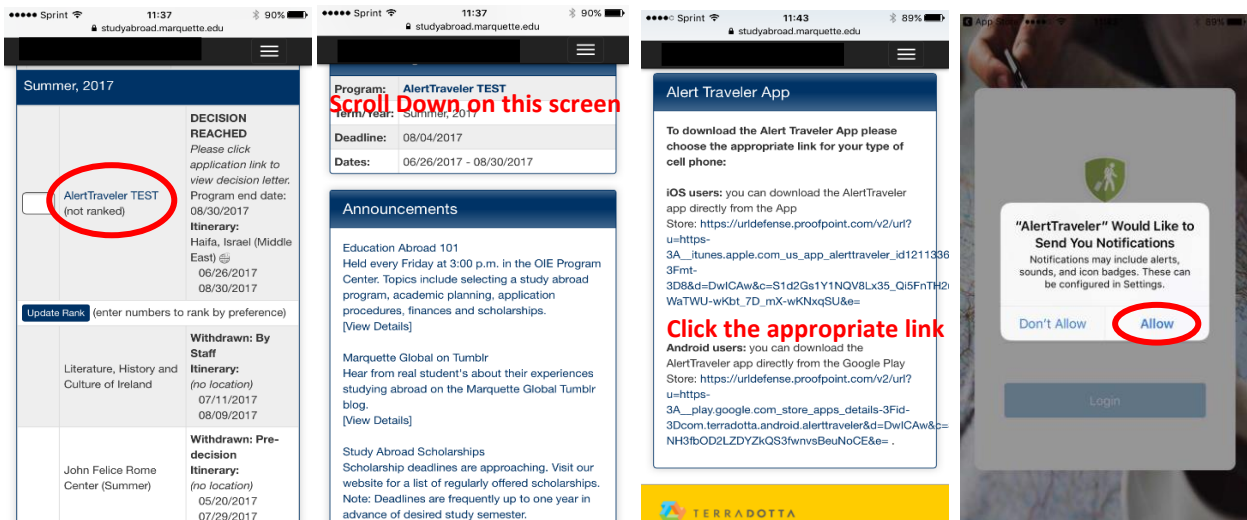
## Alert Traveler Instructions

The Alert Traveler App is a useful tool for anyone going out of the country and trying to stay safe. The app sends safety alerts to your phone according to your GPS location as well as alerts based on your itinerary through Terra Dotta (our online application database). The app requires a few extra steps while downloading so please pay close attention to these instructions in order to successfully install the app.

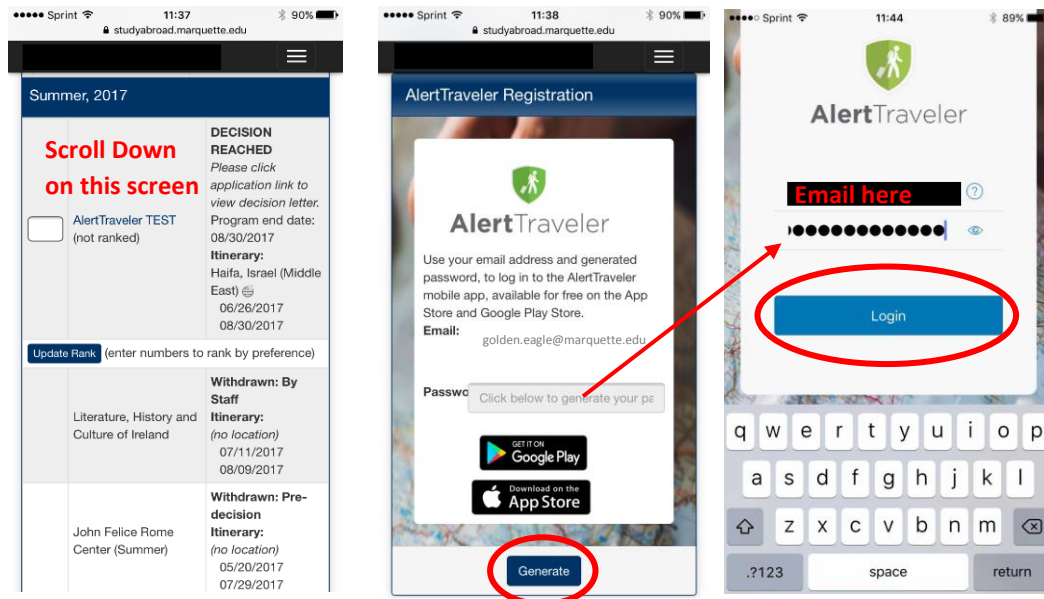
1. Log on to your Terra Dotta account by going to [studyabroad.marquette.edu](http://studyabroad.marquette.edu), clicking the menu bar in the upper right corner, clicking Login/Register, and entering in your Checkmarq username and password as shown below. It is important to do this on your mobile device.



2. Downloading the App: After you have logged on, click on the program you are committed to (in this case Alert Traveler TEST. Find the link that says "Alert Traveler App" under the "Signature Documents" section. After opening, select the appropriate link for your device, either iOS or Android. Your phone will then bring you to the App store. Proceed to download the app to your device and open it. Make sure to allow AlertTraveler to send you notifications, if it asks.



3. After the app is open, it will prompt you for a username and password. Return to the home screen on Terra Dotta as shown in the first picture below. Scroll all the way down until you see the Alert Traveler Registration section with a button at the bottom that says “Generate.” Use your MU email for the email section and after pressing generate, your personalized password will appear. Copy and paste this information into the app and click Login.



4. Now that you have installed the app, you will receive safety alerts on your mobile device. Feel free to explore the various sections of the app. You will receive alerts for the country your program is in, as well as the country your GPS locates you in. In the example below, the person is in the United States, but also receives safety alerts from Israel because their Terra Dotta itinerary indicates they are in Israel. You can also research other countries by using the top right search button. The menu button in the top left corner will have 5 options.
  - a. Location Info: This gives you information about your GPS location. Here you can look at the safety alerts, political conditions, security issues, travel logistics, cultural factors, health advisories and other useful information. The contacts button also gives you the emergency numbers for the area you are in.
  - b. Subscriptions: This shows which countries you are currently receiving notifications for. This will include the country on your Terra Dotta itinerary and the country of your GPS location.
  - c. My Alerts: This section details each safety alert in the countries you have subscribed to. Depending on the severity of the alert, it also provides a button for you to “Check in” and verify you are alright.
  - d. Emergency Contact: Here you will quickly be able to see the emergency contact information for the country you are located (via GPS). It also provides OIE’s emergency contact number and a list of embassies.
  - e. Help: In case you are having any technical difficulties after logging into the app.